



## **Sto High Performance Coatings** Applying The Art of Coatings

# Sto High Performance Coatings can turn any project into a spectacular work of art.

The proven performance and reliability of Sto specialty coatings have made Sto the product of choice for architects around the world for more than 50 years. You will find a wide variety of Sto products that can be applied to concrete or masonry substrates using proven application techniques to create dramatic effects. Products such as StoCoat™ Lotusan® with **Lotus-Effect®** demonstrate our dedication to continual innovation in the coatings industry. Whether it's the combination of EPS shapes for accents, or using our decorative coatings to give color and texture, Sto will provide you with the products that give you the freedom and ability to go beyond traditional masonry architecture.

Sto offers a complete line of commercial grade acrylic-based protective coatings with some of the broadest choices of textures specially formulated for masonry substrates. Available with or without texture, Sto masonry coatings help ensure the long term durability and beauty of your floors, ceilings, and walls both inside and out. All Sto acrylic-based coatings are vapor permeable, easy to apply, safe, non-toxic, low VOC, and available in a variety of colors.

In addition to a wide range of available coatings products, Sto has the product line to act as your sole source provider for everything from shape coatings for architectural accents to concrete repair mortars to repair masonry conditions.

## Sto has a High Performance Coating System for your project.



Tilt-up concrete



Stucco/Plaster



Cinder block/CMU



Precast or cast-in-place concrete



Brick



EIFS



Split Faced Block

# Three Step Product Selection Guide

## 1 Identify the substrate you will be covering.

Sto coatings can be applied over any of the following prepared substrates:



Brick/masonry



CMU



Pre-cast concrete



Tilt-up concrete



Poured in place concrete



Stucco/Portland cement plaster



Acrylic coated surfaces



EIFS

### Sto coatings are:

- For interior or exterior use (except for elastomeric coatings - exterior only and Sto DécorTex - interior only)
- Acrylic-based or silicone enhanced acrylic
- Spray or roller applied
- Formulated for safe and easy application
- Independently tested for scientifically proven performance

For complete testing data, please review the Sto Coatings Testing Summary Chart included on page 4 of this catalog. Please note that all tests were performed on randomly selected finished products.

### Select the appropriate Sto Primer:

Sto Primers can be used for priming prepared concrete, masonry, plaster, EIFS base coats, or drywall surfaces. Available in both sanded and smooth textures, Sto primers promote uniform substrate absorption and can help maintain proper dry film thickness. In many instances, they can also lower your overall costs by extending top coat coverages.

## 2 Determine whether you need an elastomeric coating.

If your substrate has hairline cracks and if you wish to guard against their future effect on aesthetics and performance, an elastomeric coating may be your best choice. All elastomeric coatings in Sto Corp.'s line are vapor permeable and can bridge hairline cracks for maximum protection.

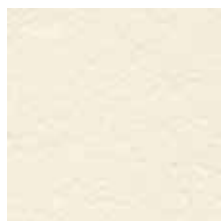
## 3 Choose the Sto Coating by considering:

- PERFORMANCE REQUIREMENTS
- CLIMATE EXPOSURE
- AESTHETICS

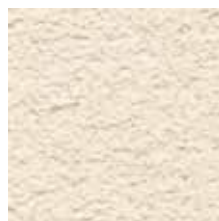
### TEXTURE:



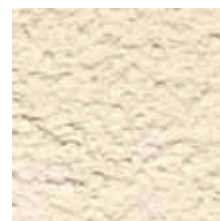
SMOOTH



LIGHT TEXTURE



MEDIUM TEXTURE



HEAVY TEXTURE

Choose a product based on characteristics and features listed on page 4.

# Sto Coatings Testing Summary

Data based on test reports by DL Labs, SGS U.S. Testing, University of Dortmund, and MACTEC Engineering†

Product	StoCoat™ Acryl	StoCoat™ Acryl Plus	StoCoat™ Acryl Medium	StoCoat™ Lotusan®	Stolastic Sand	Stolastic Smooth	StoSilco® Lastic	Sto Powerwall™ Finish	Sto Powerflex Finish
Product Number	201	648	657	216	211	212	222	296/297/298/299	280/281/282/283
Description	Interior/Exterior grade wall coating	Interior/Exterior universal grade coating	Exterior grade textured coating that is traffic durable	Exterior wall coating with the <u>Lotus-Effect®</u>	Textured elastomeric wall coating	Elastomeric exterior wall coating	Silicone enhanced elastomeric wall coating	Flexible medium to heavy textured wall coating	Elastomeric medium to heavy textured wall coating
Texture	Smooth	Smooth	Medium	Smooth	Light Sand	Smooth	Smooth	Medium or Heavy	Medium or Heavy
Application Thickness, Wet mils (mm)	5 - 7 (0.13 - 0.18)	8-10 (0.20 - 0.25)	8-10 (0.20 - 0.25)	5 - 7 (0.13 - 0.18)	12-14 (0.30 - 0.36)	12-14 (0.30 - 0.36)	14-18 (0.36 - 0.46)	N/A	N/A
Tested Thickness, Dry mils (mm)	3 - 3.5 (0.08 - 0.09)	4.5 - 5 (0.11 - 0.13)	N/A	N/A	N/A	8 - 9 (0.20 - 0.22)	8 - 8.5 (0.20 - 0.22)	N/A	N/A
ASTM E 96 Water Vapor Permeability, perms (ng/Pa·s·m²) one coat at reported dry mil thickness	46 (2637)	25 (1434)	21 (1200)	N/A	30 - 40 (1680 - 2250)	40 - 50 (2250 - 2810)	50 - 60 (2810 - 3375)	17.5 (1000)	21 (1200)
ASTM E 96 Water Vapor Permeability, perms (ng/Pa·s·m²) two coats at reported dry mil thickness	34.0 (1950)	16 (920)	13.4 (720)	40 (2280)†	20 - 30 (1125 - 1680)	30 - 40 (1680 - 2250)	40 - 50 (2250 - 2810)	N/A	N/A
ASTM D 412 Tensile Strength, psi (MPa)	585 (4.1)	386 (2.70)	N/A	182 (1.25)†	290 (2.00)	290 (2.00)	250 (1.72)	N/A	60
ASTM D 412 Elongation at Break, %	14.1	306	N/A	N/A	450	450	315	N/A	200
Adhesion to Concrete, psi (MPa)	300 (2.07)	320 (2.20)	300 (2.07)	550 (3.79)†	305 (2.10)	345 (2.38)	320 (2.20)	> 40 (0.27)	> 95 (0.65)
Percent Solids, by volume*	55	53	53	52†	60	60	60	N/A	N/A
This product complies with US EPA (40 CFR 59) and South Coast AQMD (Rule 1113) VOC emission standards for architectural coatings. VOC less than.	< 50 g/L	< 50 g/L	< 50 g/L	< 100 g/L***	< 50 g/L	< 50 g/L	< 50 g/L	< 50 g/L	< 50 g/L
CO <sub>2</sub> Diffusion Resistance Coefficient	1,160,000	1,400,000	317,000	N/A	496,000	496,000	491,000	N/A	N/A
CO <sub>2</sub> Diffusion Resistance, m	174	200	140	N/A	144	144	142	N/A	N/A

KEY: N/A = Not Applicable \*Percent Solids by volume is approximated from change in thickness from wet application to measured dry film. • \*\*Neat film result †Lotusan results based on in-house testing. \*\*\*StoCoat Lotusan complies with US EPA (40 CFR 59) only.

## A Word About Sto Primers

Sto has a number of primers available specifically formulated to enhance the coverage and bond of our high quality coatings.

**801 Sto Primer Sand** - A standard primer for enhancing the bond of coatings to the substrate while improving coverage.

**804 Sto Primer Smooth** - A smooth primer designed for use over concrete block and other masonry substrates.

**805 Sto Hot Prime®** - A smooth acrylic primer designed to bond to masonry substrates with a pH up to 13.

### StoCoat™ Lotusan® The Exterior Coating with **Lotus-Effect®**

StoCoat™ Lotusan® featuring a pronounced self-cleaning effect:

- Very high level of water- and dirt-repellence after drying of the coating.
- Highly resistant to soiling, pronounced self-cleaning effect.
- Resists the growth of mold, mildew, and algae.
- Excellent weather and chalk resistance, UV-stable.
- Ideal for new construction and recoat projects over concrete, stucco, EIFS, fiber cement board and primed or pre-painted wood substrates.
- High water vapor permeability.
- Smooth matte (flat) surface.
- Available in virtually any color including custom color matches.
- Can be recoated with traditional acrylic & silicone based paints, though with the loss of the Lotus-Effect®.
- Extended cleaning and recoat cycles = lower maintenance cost.



Lotus leaf – Inspiration for StoCoat™ Lotusan®

# Specialty Coatings

Sto also offers several specialty coatings that are acrylic based for interior and exterior walls and floors. All Sto specialty coatings are vapor permeable.

WALL	
<p><b>Decocoat</b></p> <p>Extremely durable; available in various color combinations, to create a unique look <small>(see up close picture below)</small></p>	
<p><b>StoCreativ® Brick</b></p> <p>Numerous colors and textures are possible; faux brick appearance</p>	
<p><b>StoCreativ® Granite</b></p> <p>The look of cut or polished granite, but in a versatile lightweight finish coating</p>	
<p><b>StoTique™</b></p> <p>Achieve an antique or mottled appearance that will make any new surface look hundreds of years old.</p>	

FLOOR	
<p><b>Decocoat</b></p> <p>Resists abrasion in moderate pedestrian traffic areas</p>	
<p><b>StoCoat™ Acryl Medium</b></p> <p>Resists abrasion in moderate pedestrian traffic areas</p>	

## Specialty Applications and System Specifications

- Interior/Exterior pool decks and walls
- Recoating over existing glazed block
- Soffits
- High traffic deck systems

# Sto High Performance Coatings have you covered.

## Problem Resolution:

- Color fading
- Blistering, cracking or delamination
- Chalking
- Efflorescence
- Mildew and dirt build-up
- Freeze thaw damage
- Horizontal decks
- Architectural detailing
- Spalling



Tilt-up commercial project using 657 - StoCoat™ Acryl Medium as well as the design services of Sto Studio.

Our experienced sales force and industry-leading technical services department are ready to support you to ensure the proper application and most up-to-date techniques are used to achieve the effect you are looking for in creating a project with outstanding curb appeal.



## Sto Studio

Our internal color design consultative group, Sto Studio, is available to help you break away from the competition by providing architectural renderings of possible outcomes to assist in your contract pursuit efforts and offer suggestions for new options in color and product selections to achieve the look desired by your customers.

## StoMachine Technology and Sto Coatings

To spray Sto coatings, we offer the technologically advanced Sto M-8 pump. This lightweight and portable unit contains a patented peristaltic pump, which provides a rhythmic, wave-like motion of the pressure disc allowing the pumping of low and high-viscosity materials.

The benefits: tremendous productivity gains and one source for application machinery and products.



For more information, contact Sto at 1-800-221-2397 or visit us on the web at [www.stocorp.com](http://www.stocorp.com).

# Sto Corp. Coatings Offering

## Smooth Acrylic

Sto offers a solid line of highly durable, quality acrylic coatings to meet the discerning eye of any customer. The majority of our acrylic coatings have a minimum of 50% solids content by volume. By comparison, most paints have solids content below 30%.

## Textured Acrylic

Sto has developed a variety of textured effects to create additional visual relief while maintaining the highest level of quality textures; and Sto Powerwall textured finishes for a deeper, more defined textured look.

## Elastomeric

When looking to achieve outstanding effects while taking advantage of the crack-bridging and weatherproofing qualities of an elastomeric coating, Sto offers Stolastic Smooth or Stolastic Sand. If higher performance and weatherability are desired, choose StoSilco Lastic. StoSilco Lastic has long set the industry standard with its use of high quality polymers and technology.

## Silicone Enhanced

The use of silicone technology creates a superior performing coating. Silicone enhanced coatings stay both cleaner and drier, reducing surface degradation, algae, mildew, and the need for constant maintenance.

Your StoSilco Lastic coated wall will stay both cleaner and drier and the surface will last longer with increased resistance to algae and mildew.

## Decorative

Sto offers a number of specialty coatings designed to achieve a wide variety of appeal for both interior and exterior detail, ranging from Sto Decocoat to Sto GraniTex™.



**Sto Corp.**

3800 Camp Creek Parkway  
Building 1400, Suite 120  
Atlanta, GA 30331

Tel: 404-346-3666  
Toll Free: 1-800-221-2397  
Fax: 404-346-3119  
www.stocorp.com



S610D 01/09 VEN 5609  
Printed in the U.S.

**ATTENTION**

This product is intended for use by qualified professional contractors, not consumers, as a component of a larger construction assembly as specified by a qualified design professional, general contractor or builder. It should be installed in accordance with those specifications and Sto's instructions. Sto Corp. disclaims all, and assumes no, liability for on-site inspections, for its products applied improperly, or by unqualified persons or entities, or as part of an improperly designed or constructed building, for the nonperformance of adjacent building components or assemblies, or for other construction activities beyond Sto's control. Improper use of this product or use as part of an improperly designed or constructed larger assembly or building may result in serious damage to this product, and to the structure of the building or its components. **STO CORP. DISCLAIMS ALL WARRANTIES EXPRESSED OR IMPLIED EXCEPT FOR EXPLICIT LIMITED WRITTEN WARRANTIES ISSUED TO AND ACCEPTED BY BUILDING OWNERS IN ACCORDANCE WITH STO'S WARRANTY PROGRAMS WHICH ARE SUBJECT TO CHANGE FROM TIME TO TIME.** For the fullest, most current information on proper application, clean-up, mixing and other specifications and warranties, cautions and disclaimers, please refer to the Sto Corp. website, www.stocorp.com.